

MGG

系列
Series

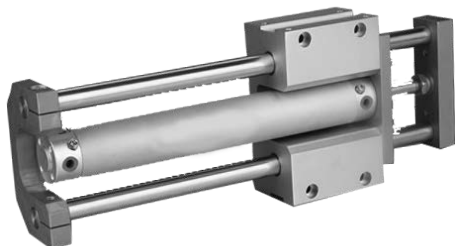
带导杆气缸

Compact twin-rods cylinder,with rod guider

MGG

系列新薄型带导杆气缸

Series compact twin-rods cylinder,with rod guider



产品特点 Features

内置油压吸震器 / with oil cushion
 附有调行程装置 / stroke adjustable
 侧面负载抵抗力强 / high bending strength
 不摇转精度高 / no rational
 导向杆的轴承可选择滑动或滚珠导向轴承 / two bearing: slide / ball bushing bearing.

型号注释 Order Code

MGG **M** **B** **32** - **100** - **Z73**

- 轴承的种类/type M:滑动轴承/Sliding bearing L:球轴承/Ball bearing
- 安装形式/Installation form B:基本型/Basic F:法兰型/Flange type
- 缸径/bore
- 行程/Stroke
- 磁性开关的型号/model 无记号/no: 无磁性开关 (内置磁环) /no
 *磁性开关型号参见附表 *Magnetic switch specifications and characteristics can refer to the magneticswitch series.
- 磁性开关个数/No. 无记号/no :2个 S :1个

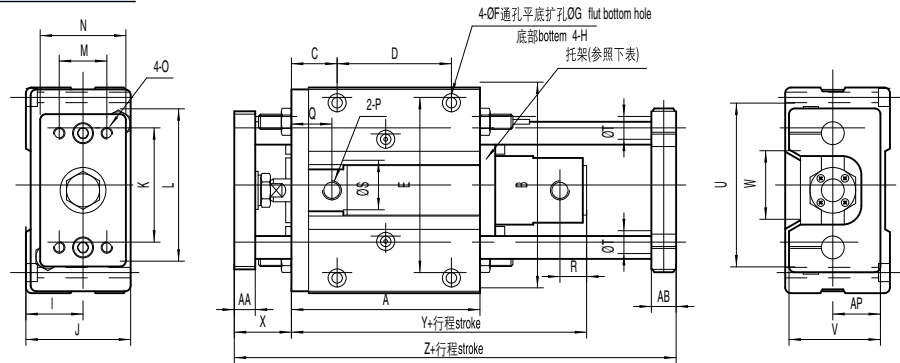
技术参数 Specification

缸径/bore(mm)	20	25	32	40	50	63	80	100
使用流体/ Fluid	空气/air							
动作方式/ Acting type	双作用/ double acting							
最低使用压力/ Min operating pressure	1.0MPa							
最高使用压力/Max operating pressure	1.5MPa							
环境及流体温度/Working temp. (°C)	-10 ~ 6 0°C (但未冻结/Not frozen)							
活塞速度/ piston speed	50~ 1000 m m / s				50~ 700 m m / s			
缓冲/ Cushion	内置液压缓冲器(2个)/Built-in hydraulic buffer(2)							
行程公差/ stroke tolerance (mm)	~1000 ^{+1.9} _{+0.2} 1001~1300 ^{+2.3} _{+0.2}							
行程可调范围(单侧)/stroke adjust rang (one side)(mm)	0~ -10		0 ~ -15					
最大吸收能量(J)Maxi. absorbed energy	5.88	19.6	58.8			147		
* 给油lubricate	不需要/no							
轴承bearing	滑动轴承/Sliding bearing球轴承/Ball bearing							
活塞杆不回转精度 / no rational	±0.07°		±0.06°		±0.04°		±0.03°	
	±0.06°		±0.04°		±0.03°		±0.02°	
接管口径Rc/ Threads	1/8				1/4	3/8	1/2	

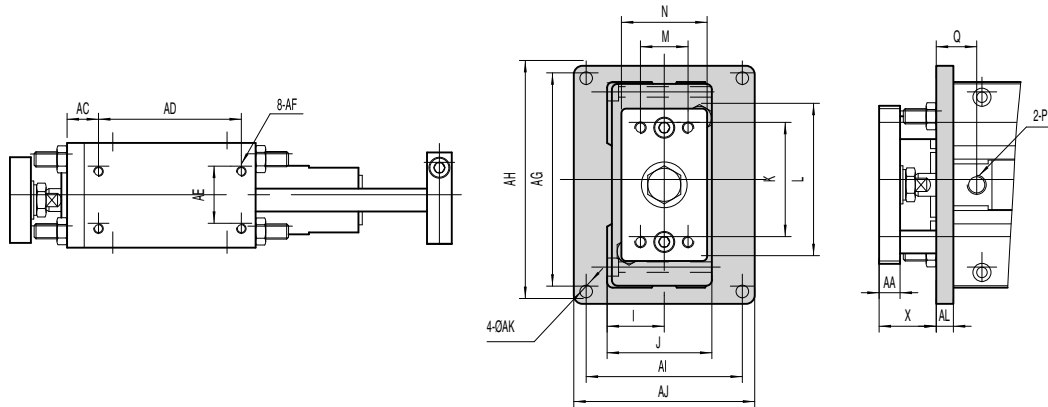
* 如需给油, 请用透平1号油ISOVG32。 / Pls use ISOV32 1 for lubricate, if necessary

外形尺寸 Outlook & Dimension

基本型 / Basic type Ø20 ~ Ø50



法兰型 / Flange type Ø20 ~ Ø50



长行程 Long stroke

超过以下行程附设托架
no holder when over stroke as below

缸径 bore (mm)	法兰型 Flange							
	Q	X	AG	AH	AI	AJ	AK	AL
20	21	30	112	125	82	95	6.6	9
25	21	37	134	150	92	108	9	9
32	21	37	134	150	102	118	9	9
40	25	44	170	186	134	150	9	12
50	26	55	190	210	140	160	11	12

缸径 bore	行程范围 stroke range	R	Y
20	250~400	14	88
25	350~500	14	88
32	350~600	14	90
40	350~800	15	101
50	350~1000	16	116

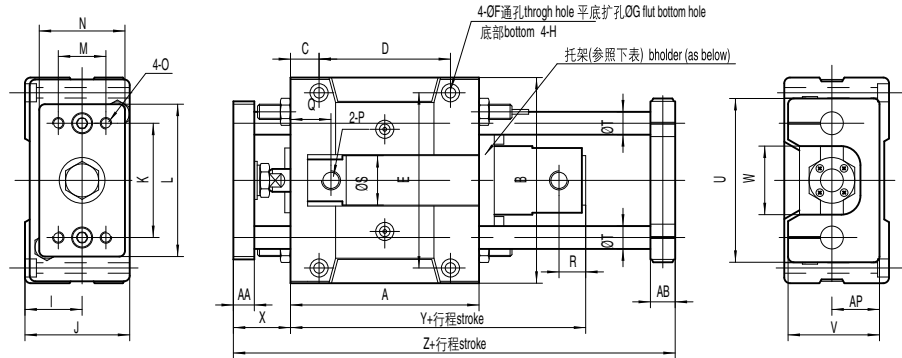
缸径 bore	附设托架行程 stroke with holder
20	>100
25	>125
32	>150
40	>200
50	>250

缸径 bore	行程范围 stroke range	A	AA	AB	AC	AD	AE	AF	AP	B	C	D	E	F	G	H
20	75,100,125,150,200	99	12	11	16.5	75	30	M5深(deep)10	25	108	24	60	92	5.5	9.5深(deep)6	M8深(deep)14
25	75,100,125,150, 200,250,300	109	16	13	16.5	85	30	M6深(deep)12	30	130	26.5	65	113	6.6	11深(deep)8	M10深(deep)18
32		129	16	16	19	100	35	M6深(deep)12	35	135	29	80	118	6.6	11深(deep)8	M10深(deep)18
40		152	19	19	22	120	40	M8深(deep)16	45	170	32	100	150	9	14深(deep)10	M12深(deep)21
50		182	25	21	22	150	45	M10深(deep)20	50	194	37	120	170	11	17深(deep)12	M14深(deep)25

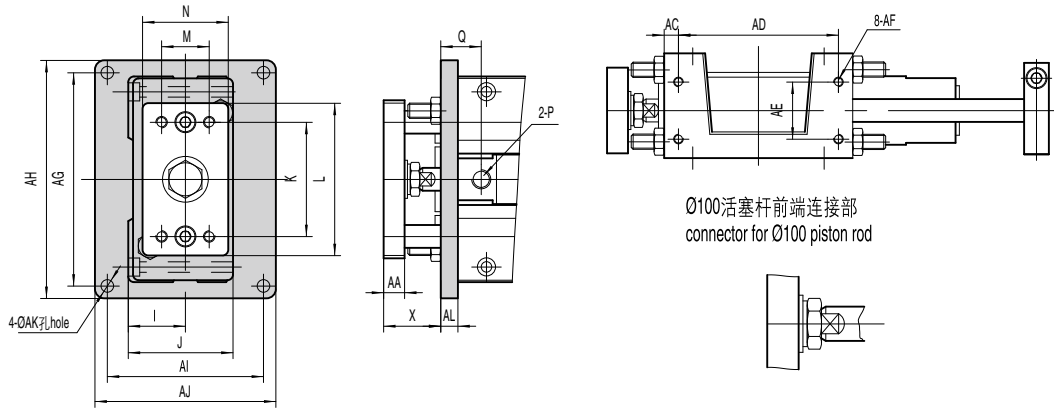
缸径 bore	I	J	K	L	M	N	O	P	Q	R	S	T	U	V	W	X	Y	Z
20	30	55	60	80	25	45	M6深(deep)9	Rc(PT)1/8	21	12	26	12	82	48	36	30	80	157
25	35	65	70	100	35	54	M6深(deep)13	Rc(PT)1/8	21	12	31	13	100	57	42	37	80	175
32	40	73	80	106	35	60	M6深(deep)13	Rc(PT)1/8	21	12	38	16	114	65	48	37	82	201
40	50	93	95	134	50	75	M8深(deep)16	Rc(PT)1/8	25	12	47	20	138	84	58	44	92	238
50	55	103	115	152	56	90	M10深(deep)21	Rc(PT)1/4	26	14	58	25	164	94	70	55	104	285

外形尺寸 Outlook & Dimension

基本型 / Basic type Ø63 ~ Ø100



法兰型 / Flange type Ø63 ~ Ø100



长行程 / long stroke

超过以下行程附设托架
holder when stroke over as below

缸径 bore (mm)	法兰型 flange type							
	Q	X	AG	AH	AI	AJ	AK	AL
63	29	54	228	250	158	180	14	12
80	40	66	262	284	178	200	14	16
100	40	66	300	326	200	226	16	16

缸径 bore	行程范围 stroke range	R	Y
63	350~1100	16	911
80	350~1200	23	514
100	350~1300	23	514

缸径 bore	附设托架行程 stroke with holder
63	>300
80	>400
100	>500

缸径 bore	行程范围 stroke range	A	AA	AB	AC	AD	AE	AF	AP	B	C	D	E	F	G	H
63	75,100,125,150, 200,250,300	200	25	25	15	170	50	M12深(deep)24	60	228	30	140	200	13.5	20深(deep)14.5	M16深(deep)28
80		230	30	27	15	200	55	M12深(deep)24	70	262	30	170	234	13.5	20深(deep)14.5	M16深(deep)28
100		280	32	30	17.5	245	70	M14深(deep)28	80	304	35	210	274	15	23深(deep)17	M18深(deep)32

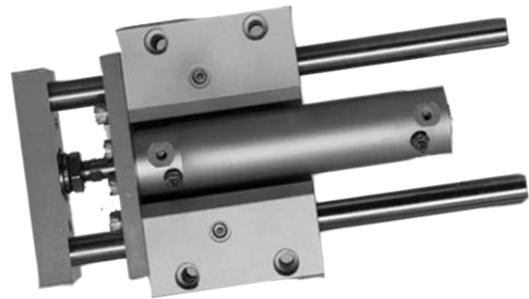
缸径 bore	I	J	K	L	M	N	O	P	Q	R	S	T	U	V	W	X	Y	Z
63	65	117	135	180	66	100	M12深(deep)23	Rc(PT)1/4	29	14	72	30	192	108	86	54	107	308
80	75	138	160	214	76	115	M12深(deep)28	Rc(PT)3/8	40	19	89	35	224	128	104	66	131	355
100	85	153	190	245	80	125	M14深(deep)30	Rc(PT)1/2	40	19	110	40	262	143	128	66	131	410

MGC

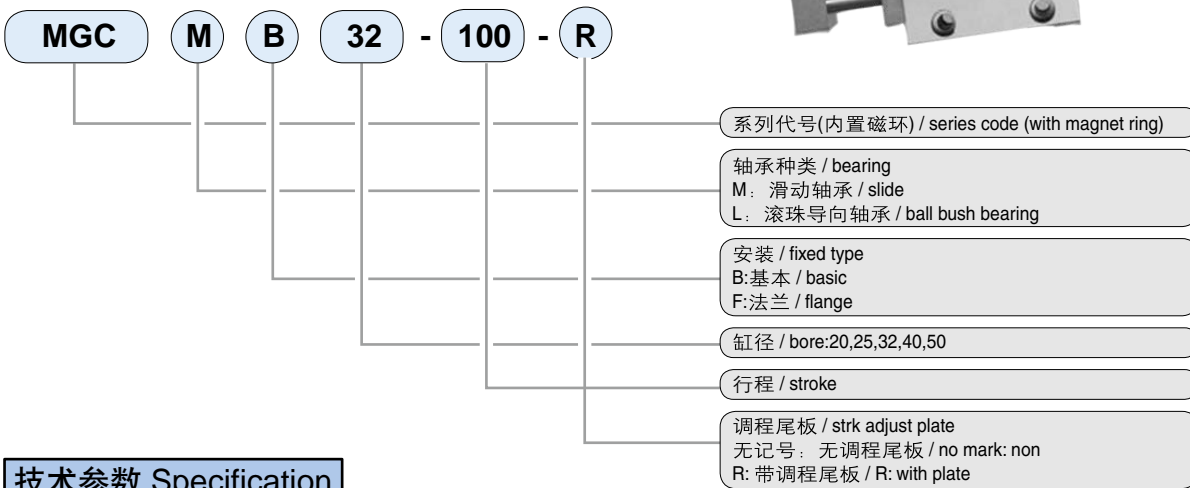
系列 **小型带导杆气缸**
Series **Mini compact twin-rods cylinder ,with rod guider**

MGC 系列小型带导杆气缸

Series mini compact twin-rods cylinder ,with rod guider



型号注释 Order Code



技术参数 Specification

内径 bore(mm)	20	25	32	40	50	
流体 fluid	空气 / air					
动作形式 motion type	双动 / double action					
保证耐压力 Ensured pressure resistance [Mpa(kgf/cm²)]	1.5 (15.3)					
最高使用压力 Max operating pressure [Mpa(kgf/cm²)]	1.0 (10.2)					
最低使用压力 Min operating pressure [Mpa(kgf/cm²)]	0.15 (1.5)					
工作温度 / Working temp. (°C)	-5~ 50					
活塞速度 / piston speed (mm/s)	50~750					
缓冲 / cushion	气缓冲(气缸本身) / air cushion					
行程 公差 / stroke tolerance (mm)	+1.9 +0.2					
* 润滑 / lubricate	不需要 / no need					
轴承 / bearing	滑动轴承/ 滚珠导向轴承 // slide / ball bushing					
活塞杆不转动精度 Accuracy of the piston rod does not rotate	滑动轴承 / slide	± 0.1°	± 0.09°	± 0.08°	± 0.08°	± 0.06°
	滚珠导向轴承 / ball bush bearing	± 0.06°	± 0.05°	± 0.04°	± 0.04°	± 0.04°
接管口径 / pipe size	M5		1/8		1/4	

* 如需润滑，请用透平1号油ISOVG32 / Please use oil ISOVG32 1 to lubricate ,if necessary

行程/磁性开关选择 / how to order stroke / magnet switch

缸径 bore (mm)	标准行程 standard stroke (mm)	长行程 long stroke	环带安装型 trap mount	
			*磁性开关 with magnet sensor	开关固定码 switch code
20	75,100,125,150,200	250, 300, 350, 400	D-C73L	BMA2-020
25	75,100,125,150,200,250,300	350, 400, 450, 500	D-C76L	BMA2-025
32		350, 400, 450, 500, 600	D-C80L	BMA2-032
40		350, 400, 450, 500, 600, 700, 800	D-H7A1L	BMA2-040
50		350, 400, 450, 500, 600, 700, 800, 900, 1000	D-H79BL	BMA2-050

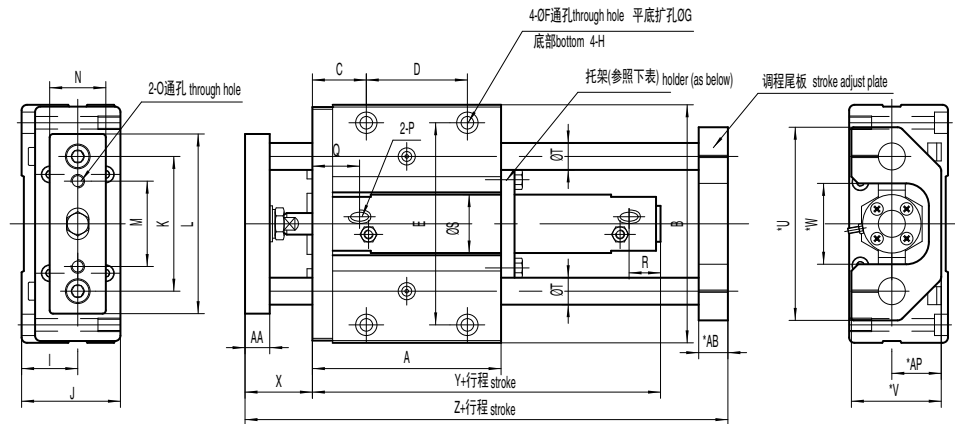
* 磁性开关规格及特性可参阅磁性开关之系列 / for more detail, please find our catalogue for switch

MGC 系列 小型带导杆气缸

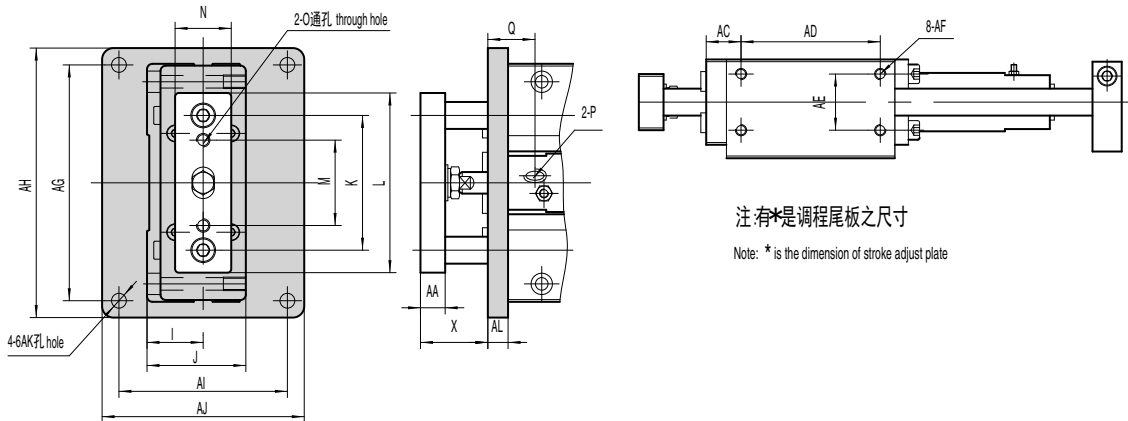
Series Mini compact twin-rods cylinder ,with rod guider

外形尺寸 Outlook & Dimension

基本型 / Basic type Ø20 ~ Ø50



法兰型 / Flange type Ø20 ~ Ø50



缸径 bore	法兰型 flange								长行程 / long stroke				超过以下行程附设托架 no holder when stroke over as below	
	Q	X	AG	AH	AI	AJ	AK	AL	缸径 bore	行程范围 stroke range	R	Y	缸径 bore	附设托架行程 stroke with holder
20	21	30	105	120	75	90	6.6	9	20	250~400	14	88	20	>100
25	21	37	120	136	84	100	9	9	25	350~500	14	88	25	>125
32	21	37	134	150	92	108	9	9	32	350~600	14	90	32	>150
40	25	44	160	176	110	125	9	12	40	350~800	15	101	40	>200
50	26	55	190	210	115	135	11	12	50	350~1000	16	116	50	>250

缸径 bore	行程范围 stroke range	A	AA	AB	AC	AD	AE	AF	AP	B	C	D	E	F	G	H
20	75,100,125,150,200	84	11	13	15.5	62	25	M5深度 10	22	106	24	45	90	5.6	9.5深度 6	M6深度 10
25	75,100,125,150, 200,250,300	89	15	13	16.5	65	30	M6深度 12	27	120	26.5	45	103	6.8	11深度 8	M8深度 14
32		94	15	13	16.5	70	35	M6深度 12	32	135	26.5	50	118	6.8	11深度 8	M8深度 14
40		107	18	16	22	75	40	M8深度 16	37	160	34.5	50	140	8.6	14深度 10	M10深度 18
50		142	23	19	22	110	45	M10深度 20	42	194	37	80	170	10.5	17深度 12	M12深度 21

缸径 bore	I	J	K	L	M	N	O	P	Q	R	S	T	U	V	W	X	Y	Z
20	25	44	60	80	38	25	M6	M5	21	12	26	12	86	40	36	30	80	140
25	30	52	70	95	46	32	M6	M5	21	12	31	13	98	47	44	37	80	153
32	35	60	80	105	50	32	M6	1/8	21	12	38	16	112	53	50	37	82	161
40	40	70	95	125	60	38	M8	1/8	25	12	47	20	132	63	60	44	92	188
50	45	82.5	115	150	75	50	M8	1/4	26	14	58	25	162	73	70	55	104	241